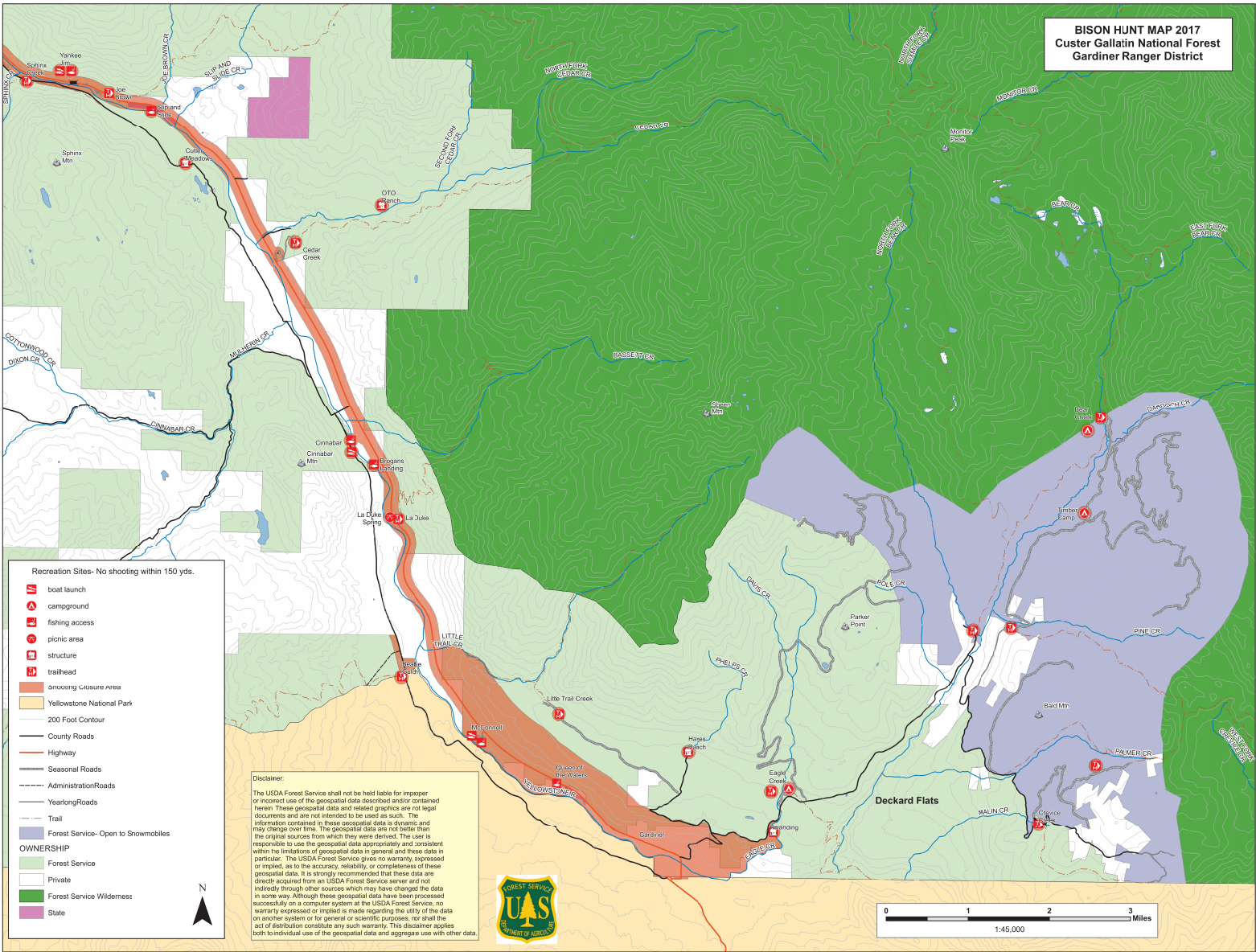


BISON HUNT MAP 2017
Custer Gallatin National Forest
Gardiner Ranger District



Recreation Sites- No shooting within 150 yds.

- boat launch
- campground
- fishing access
- picnic area
- structure
- trailhead
- Smoking Closure Area
- Yellowstone National Park
- 200 Foot Contour
- County Roads
- Highway
- Seasonal Roads
- Administration Roads
- Yearlong Roads
- Trail
- Forest Service- Open to Snowmobiles

OWNERSHIP

- Forest Service
- Private
- Forest Service Wilderness
- State

Disclaimer:
 The USDA Forest Service shall not be held liable for improper or incorrect use of the geospatial data described and/or contained herein. These geospatial data and related graphics are not legal documents and are not intended to be used as such. The information contained in these geospatial data is dynamic and may change over time. The geospatial data are not better than the original sources from which they were derived. The user is responsible to use the geospatial data appropriately and consistent with the limitations of geospatial data in general and these data in particular. The USDA Forest Service gives no warranty, expressed or implied, as to the accuracy, reliability, or completeness of these geospatial data. It is strongly recommended that these data are directly acquired from an USDA Forest Service server and not indirectly through other sources which may have changed the data in some way. Although these geospatial data have been processed successfully on a computer system at the USDA Forest Service, no warranty expressed or implied is made regarding the utility of the data on another system or for general or scientific purposes, nor shall the act of distribution constitute any such warranty. This disclaimer applies both to individual use of the geospatial data and aggregate use with other data.

